

Supplemental Instructions:

Ombre Fabric-

Yardage for top- minimum 1 ½ yds. of Ombre fabric.

- **IMPORTANT-** Please read all of these instructions before cutting your fabric!
- Using an Ombre fabric on your French Braid Frenzy table runner can create a cool and unique effect- but you do need to do your prepwork and cutting a little differently. This fabric is best using the Saves Time Method- as you will be cutting wider sections of fabric and then subcutting them into your rows.

Your Ombre Fabric will traditionally go from Light to Dark across the width (selvedge to selvedge) of your fabric- and that is what these supplemental instructions were written for:

- Start by Cutting out (3) 14" WOF strips, and (1) 2 ½" WOF strip. Before cutting your rows out of the strips, you will need to decide how you want your table runner to look. I cut mine with more light in the center with the darker sections to the outside, but you could reverse this with light outsides and a dark center if you want to, or even go from Light to Dark across the length of the runner.
- Once you decide on the look of your runner you can begin cutting. Subcut the (3) 14" wide strips into (19) 3 ¼" strips and (19) 1 ¾" strips- making sure to cut a wide strip then a narrow one, instead of doing all of one and then all of the other. This ensures that your wide strips and narrow strips are closest in color since one of each will comprise a row in your table runner. You will also want to pin together and label the rows as you cut them as the subtle variation in shading is not always easily distinguishable in an ombre fabric. You will get the majority of your strips out of the first (2) sections, and you can fussy cut the remaining rows from your 3rd section of fabric to add more light or dark as you prefer. But before you cut the last few rows out of your 3rd section, cut the pieces for your 1st row as called out in the Cutting Instructions- you will need to cut them out of the shading of fabric that best matches what you selected for row 2 (light or dark) to get the best effect. Once you cut out row 1, proceed to finish cutting the remaining rows you need.
- After all of your narrow and wide strips are cut, you will need to cut the remaining small rectangles for each row. Use the 2 ½" strip and fussy cut the small rectangles (2 ½" x 1 ¼") by matching the shading of each of the rows that you have previously cut. You will need (1) rectangle per row for rows 2-20. Row 1 is different and doesn't need any. Make sure to either label each of these rows- or keep them with your Wide and Narrow strips in order to keep them in the order you want them (it's easy to get them mixed up- ask me how I know).
- Cut your Accent Squares out per the Cutting Instructions. This will complete your Cutting needed for the top.
- Now that your cutting is complete- you can proceed as directed by your instructor (if you are in class) or follow the printed instructions in your pattern to finish your French Braid Frenzy Table runner.

Supplemental Instructions:

Quilt As You Go

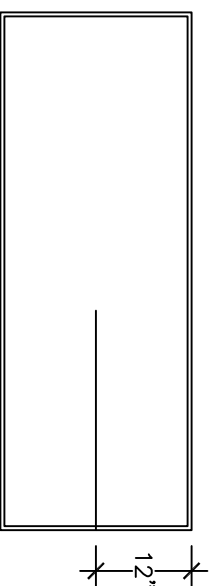
You can create your French Braid Frenzy Table Runner as a Quilt As You Go project.

Piece together section of your back fabric if necessary- but cut out a piece of backing fabric at least 24"w and 65" long.

Cut out a piece of batting, 23" by 64" long.

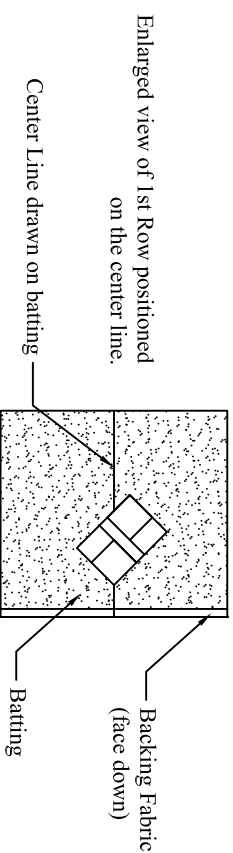
Lay your backing face down on your surface, and then lay the batting on top, leaving about ½" visible all the way around. Using Quilting Pins (curved safety pins) pin the batting to the backing with approximately 4-5" between the pins in any one direction. The pins are important as they will keep your batting/backing from shifting while you are sewing.

Draw a line down the center of the batting approximately 12" from either of the long sides. Starting on the Left side of the batting- extending about 15".



Creating the Top:

- To start creating the top, sew together Row 1 of your table runner by following the Instructions, Steps 1-5.
- After Row 1 is complete, lay it on one end of your batting (face up), about 1" from the edge with opposite corners of the first Accent Square falling along the line you drew on your batting. Because the table runner is curly, it is important to start this first row off straight to keep from veering too far to one side or another and off the edge of your backing/batting.



Row 1 is symmetrical, so either one of the Accent Squares can be your first.

The dotted line shows how the line you drew on the batting would extend through the first block.

Supplemental Instructions:

Quilt As You Go (continued)

- Once you get Row 1 positioned properly, pin it in place and take it over to your machine and baste it down about $\frac{1}{8}$ " from the edge of the block. By using basting stitches, once the table runner is done you can remove the stitches, or leave them in since they will be covered by your 2nd row and the binding.
- With Row 1 secure, you can begin sewing on the remaining rows by following the pattern, piecing the rows by sewing through all of the layers. Make sure to avoid sewing in wrinkles by gently pulling out any folds in the fabric and batting as you go, and removing the quilting pins as you come to them.
- *As with most Quilt as You Go style projects- you will get your best results if you press each piece after you sew it on.*
- After all of your rows are sewn on to the backing and batting, follow the pattern instructions on how to trim up the table runner. If you would like a demonstration- check out my YouTube video on "How to Trim your French Braid Frenzy" table runner.
- Once trimmed, bind the tablerunner per your preferred method.